



PowerDOCS Interceptor Learning Tool

January, 2001

Copyright 2001, Hummingbird

Integrating New Applications Using the Interceptor Learning Tool

The Interceptor Learning Tool (ILT) is a separate component of PowerDOCS Interceptor that assists you in integrating applications for PowerDOCS. This tool is designed to help you configure Interceptor to accept other applications not currently listed in the Application Settings tab of Interceptor. This executable file, ILTWizard.exe, is located in the Tools>PowerDOCS>Interceptor Learning Tool folder on the Fusion Family CD.

The Interceptor Learning Tool is similar to other application wizards, in that it is designed to guide you through the entire process of configuring the desired application. In the following instructions, the Interceptor Learning Tool will be referred to as the ILT Wizard.

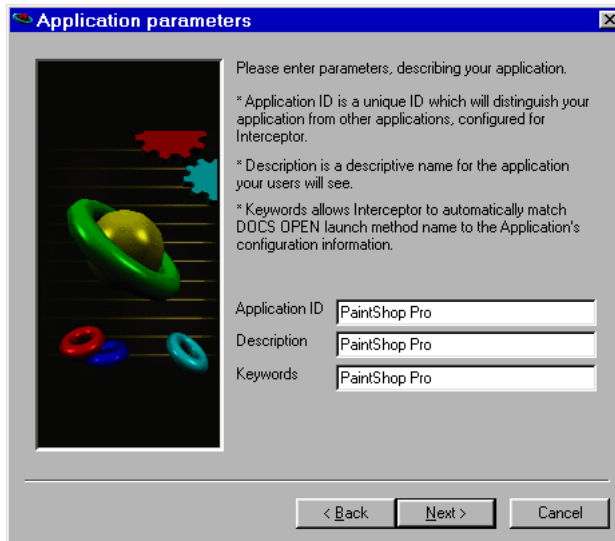
Integrating an Application

The example below shows how to integrate Paint Shop Pro.

NOTE: Prior to setting up applications using the ILT Wizard, a Launch Method must be created in DOCS>Library Maintenance>Applications. The Launch Method must use Full Integration. For information on setting up Launch Methods, refer to “*Creating Launch Methods for Interceptor Applications*” located in Appendix A of the *PowerDOCS Installation Guide*.

- 1 Insert the Fusion Family CD in your disk drive. The DOCSFusion Family installation menu will be displayed. Click Browse CD Extras.
- 2 My Computer will launch. Select Tools>PowerDOCS>Interceptor Learning Tool. Double-click ILTWizard.exe.
- 3 The Welcome window appears. Click Next.

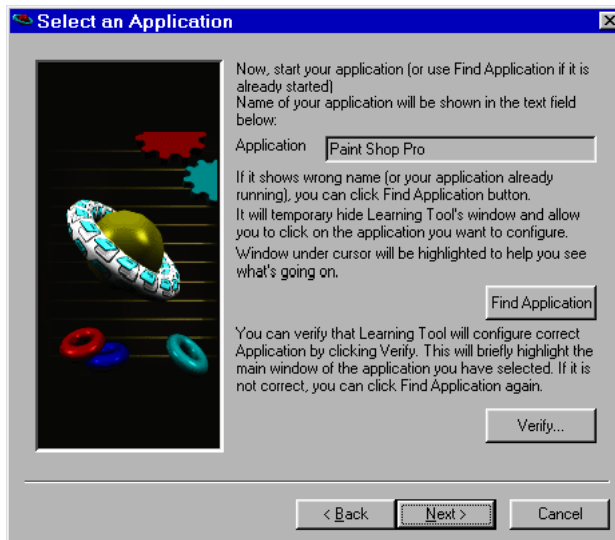
4 The Application parameters dialog box will be displayed.



5 Following the on-screen instructions, complete the Application ID, Description, and Keywords fields.

- **Application ID:** Type the Application ID you chose when creating this application's launch method. If these Application IDs do not match, PowerDOCS may have trouble reconciling the application with its launch method.
- **Description:** Type the application name in this field.
- **Keywords:** Specify the Application ID you chose when creating this application's launch method. PowerDOCS will attempt to match the value(s) in the Keywords field to words in the Launch Methods. Click Next.

6 The Select an Application dialog box appears. The application you are integrating must be currently open on your desktop. Our example uses Paint Shop Pro. You should open the application of your choice now.



7 If the application name does not appear in the Application field, you can use the Find Application feature to locate the application. The Paint Shop Pro window should be maximized in the background. Click Find Application. The ILT Wizard will minimize, and a specialized cursor will appear. Click the Paint Shop Pro window.

NOTE: You may receive a message, asking you to open one document in the MDI application before continuing. If you receive this message, press Alt+Tab and select your application. Then click File>New or File>Open and open a file into your application. Then press Alt+Tab to select the ILT Wizard and click Find Application again.

The Select an Application dialog box will reappear. Paint Shop Pro should be listed in the Application field.

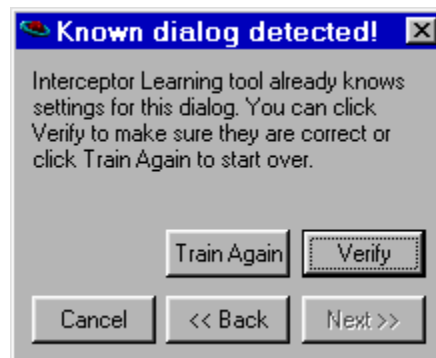
8 Verify that the correct application is selected by clicking Verify. The ILT Wizard window will minimize, and your application window will be flashing. You will be asked if this is the correct application. Click Yes if the correct application is flashing.

9 From the Select an Application dialog box, click Next.

10 The Dialog Configuration screen will appear. You must specify the application commands that you want to configure for Interceptor. File>Open and File>Save As are the most common commands to integrate with PowerDOCS and will be used in this example. The File>Import and File>Export commands are also available. Press Alt + Tab to select Paint Shop Pro and click File>Open.

11 Press Alt + Tab again and select the Interceptor Learning Tool Wizard. "Open" should appear in the text field of the Dialog Configuration window. If it does not appear, click Find Dialog. The ILT Wizard will minimize, and a special cursor will appear. Click the Open dialog box. The ILT Wizard will reappear, and Open should be displayed in the text field.

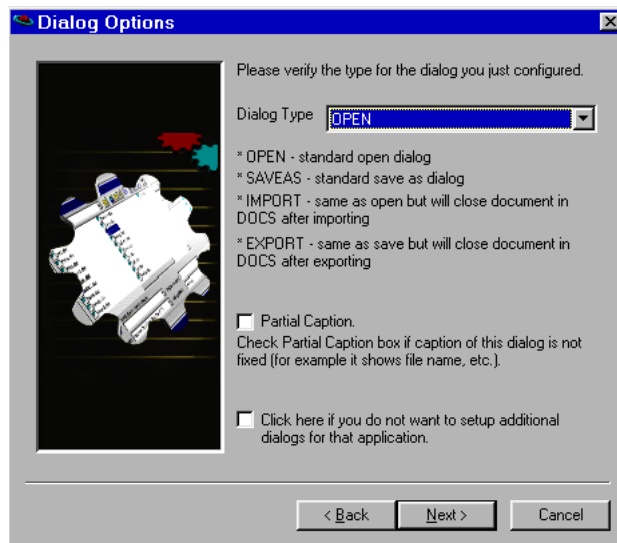
12 You must confirm that the correct dialog box was selected by clicking Verify. You will be asked if the correct dialog box is flashing. Click Yes if this is correct. Click Next to continue. The Known dialog detected! Dialog box appears in the upper-right corner of your screen.



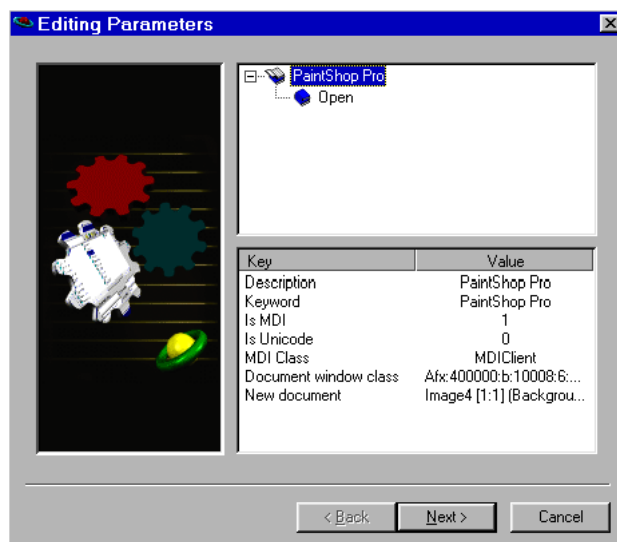
It will indicate if the dialog window you have configured is recognized by the Interceptor Learning Tool.

13 Click Verify to confirm that the correct command will be intercepted. The ILT Wizard will highlight the appropriate fields of the dialog box you configured. You will be asked if these fields are correct. If you agree, click Yes. Click Next to continue and proceed to step 16. If the fields are not correct, click No and proceed to step 14.

- 14 If the dialog box is not known to the Interceptor Learning Tool, click Train Again. The Configure Dialog window will appear. You will be instructed to click in the File Name field of the dialog box you are attempting to configure. The next step is to click OK. Some applications do not have an OK button. In this case, the Open button represents the OK command.
- 15 The last step is to click Cancel to return to the Dialog Configuration window. Click Verify on the Dialog Configuration window. You will be asked if this is correct. Click Yes, then click Next to continue.
- 16 The Dialog Options screen appears. Make sure that the command you just configured is displayed in the Dialog Type field. In this case, the Open command should appear. If the caption of the dialog box is not fixed (for example, it may show a file name in addition to the dialog box title), click the Partial Caption check box.



- 17 If you do not want to set up additional dialog windows, click the second check box. If you will be configuring additional dialog boxes, leave this check box unmarked and click Next.
- 18 If you have finished integrating dialog boxes for this application, select the second check box and click Next.



19 To edit any of the parameters, double-click the desired key. Edit the shown value and click OK. Click Next to continue.

WARNING: We strongly recommend that you not change the parameters that you configured through the ILT Wizard.

20 The final ILT Wizard dialog box appears, confirming that your application is configured. If you want to configure another application, select the check box at the bottom of this dialog box and then click Next. If you do not want to configure another application, click Finish to close the ILT Wizard.

To use the newly integrated application, you must do the following:

- 1** Enable the integration. Refer to “*Enabling Applications with Interceptor*”, located in Appendix A of the *PowerDOCS Installation Guide*. Close and restart PowerDOCS Interceptor before using this integrated application.
- 2** Create a PowerDOCS launch method for this application. Refer to “*Creating Launch Methods for Interceptor Applications*”, located in Appendix A of the *PowerDOCS Installation Guide*. This is separate from creating a Launch Method using the DOCS Admin Tools.
- 3** You can export these settings for your users. Refer to “*Exporting the Interceptor Settings*”, located in Appendix A of the *PowerDOCS Installation Guide*.